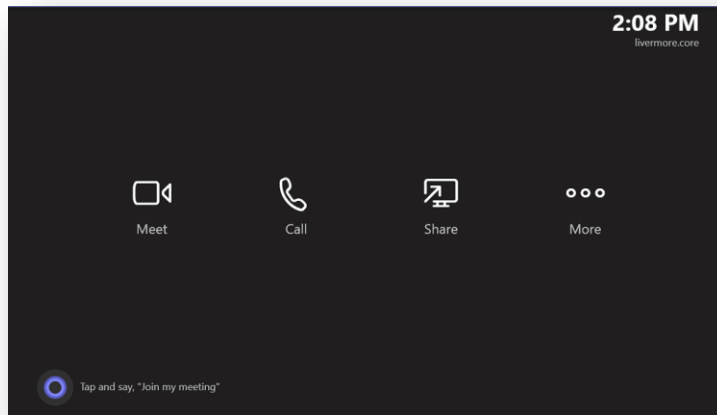


How to Access the Administration access on an MTR

NOTE: These instructions need to access the MRT's administrator's login screen.

- 1.) Access the MTR and connect a Keyboard to the System.
- 2.) You should be within the MTR main screen:

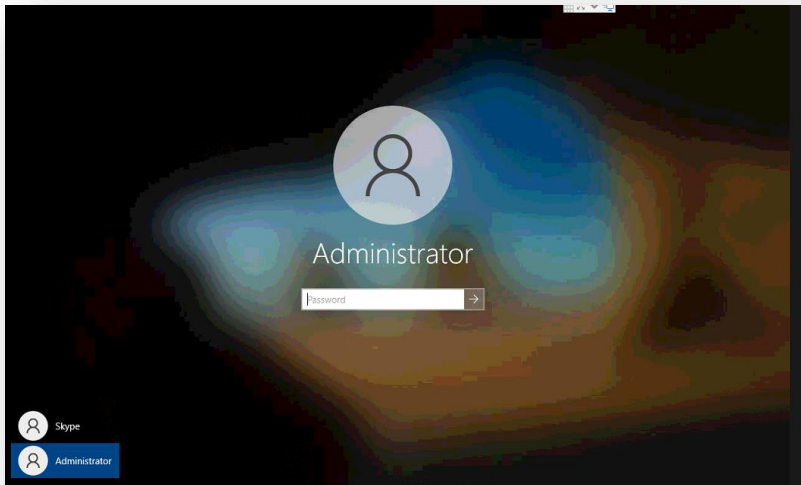


- 3.) With the Keyboard attached to the MTR, please select the windows key and click on it 5 times.



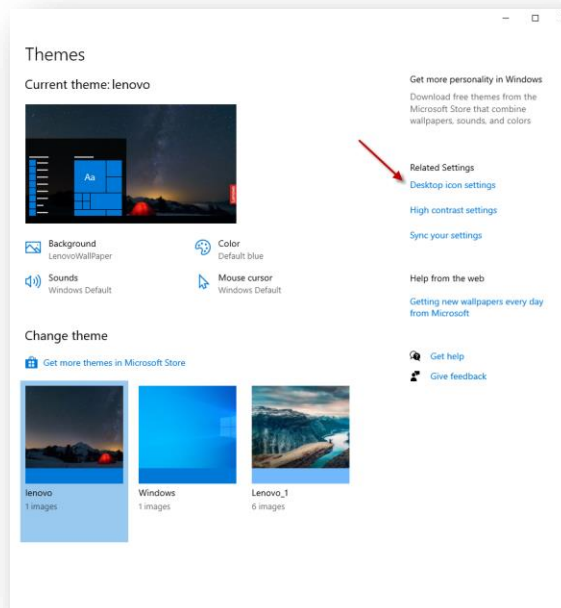
- 4.) The Screen will show the Administrator login access, Please Log into as Administrator:

Knowledgebase Article

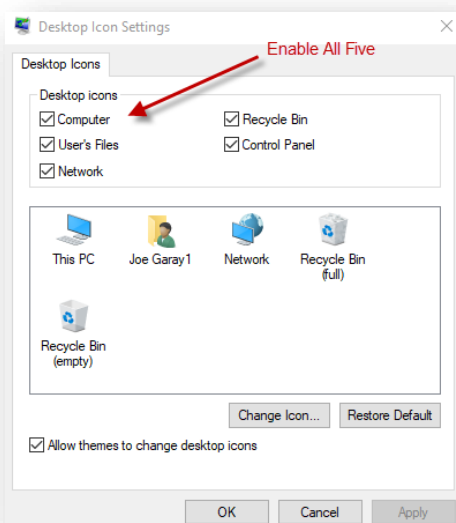


Please make it a habit to do the following two configurations below to make your life easier when accessing your MTR.

- a. Change the ICON's on MTR admin profile:
 - i. On the Windows Desktop - Right Click - Click "**Personalize**" - Left Hand Side Click "**Themes**" - Right Hand Side Click "**Desktop Icon Settings**" - Add all FIVE Desktop Icons



Knowledgebase Article



ii. Open File Explorer and set to Show “Hidden Files” & “File name extensions”

